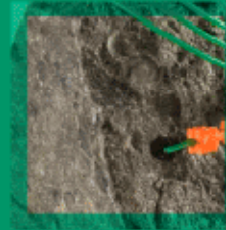




## INTERIM RESULTS PRESENTATION FOR THE SIX MONTHS ENDED 30 SEPTEMBER 2009

creating customer wealth by leveraging knowledge



# Group at a Glance



## OMNIA GROUP (PTY) LTD

### CHEMICALS



### MINING



### AGRICULTURE



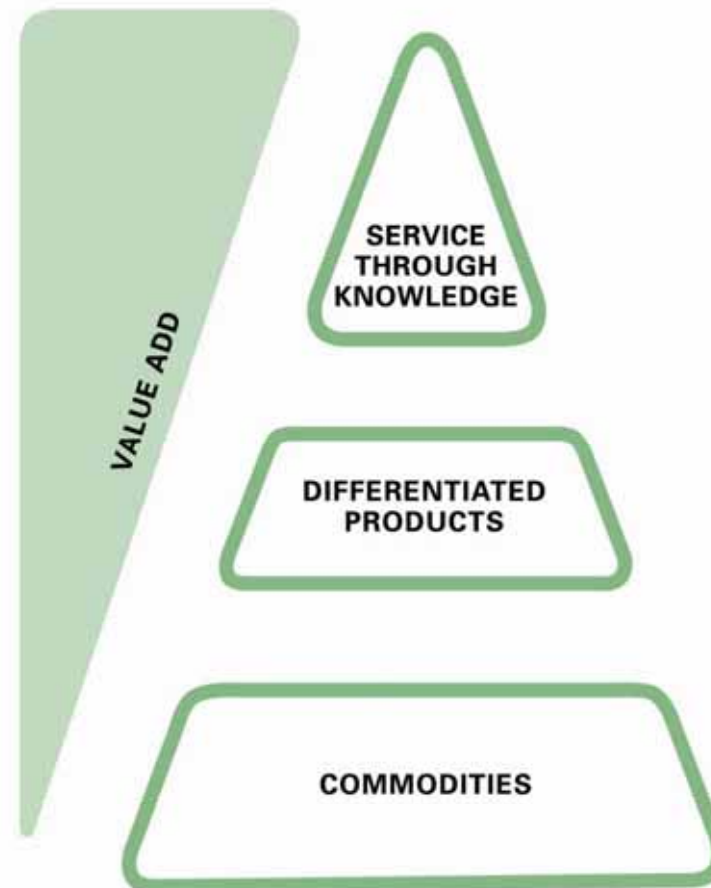
*\*the science of growing • wetenskap vir groei*



## The Omnia Proposition



- Leverage intellectual capital and technology to create value for customers
- Respond innovatively with differentiated products and services
- Develop offerings positioned further up the pyramid model to broaden the value added



---

## Key Drivers



- Downward valuation of inventory
- Softening volumes
- 21% strengthening of the rand



## Major Features



	2009	2008	% change
Revenue	<b>R 4.2 bn</b>	R 5.5 bn	(22%)
(Loss)/profit for the period	<b>(R 99 m)</b>	R 373 m	(127%)
Basic (Loss)/profit per share	<b>(218.2 cents)</b>	839.0 cents	(126%)

- Extraordinary performance in prior period



---

## Operating Environment



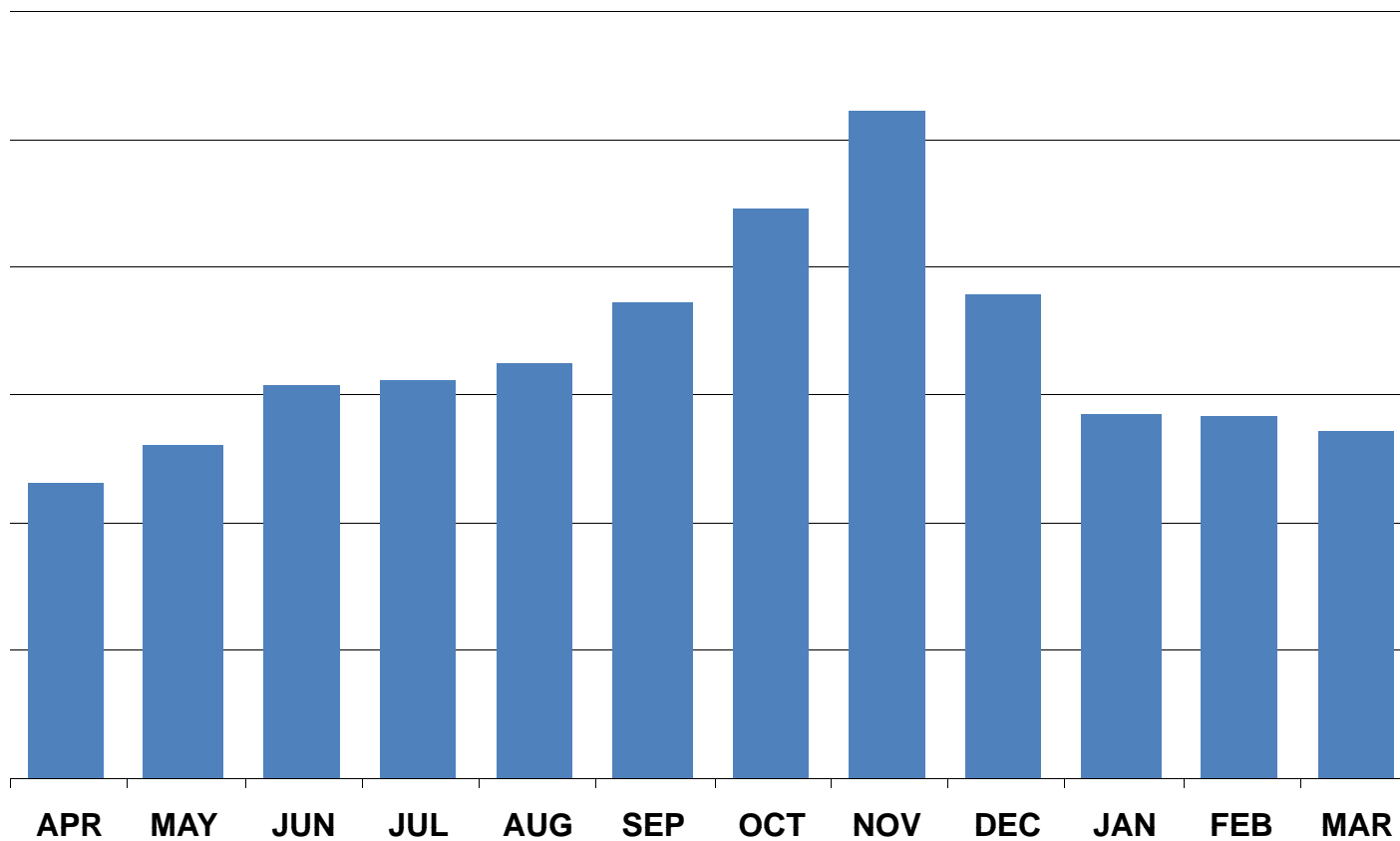
- Appreciation of the rand
  - Impacts negatively on all three divisions
  - Export markets uncompetitive for our customers
  - Downward valuation of inventories
- Substantially lower commodity prices
  - Affected key raw materials as well as selling prices
- Softer volumes
  - Manufacturing index recorded negative growth for 10 consecutive months to June 2009



## Monthly Sales Profile



The seasonal nature of agriculture typically impacts the balance sheet at the interim stage



OMRIA

## Operational Review – Chemical Division



	2009	2008	% change
Revenue	<b>R 1.8 bn</b>	R 2.3 bn	(20%)
Profit for the period	<b>R 59 m</b>	R 156 m	(62%)
Operating margin	<b>3%</b>	7%	

- Group remains focused on long term growth
  - Acquisition of Petroleum Fine Products
- Fall in operating margin due to:
  - Decline in international prices necessitating stock adjustments
  - Strengthening of the rand



## Operational Review – Mining Division



	2009	2008	% change
Revenue	<b>R 0.9 bn</b>	R 1.0 bn	(11%)
Profit for the period	<b>R 106 m</b>	R 126 m	(16%)
Operating margin	<b>12%</b>	13%	

- Reduced demand for commodities impacts on customer's volumes
  - Coal, uranium, gold, iron ore less affected
- Slow down of customers' expansion projects
  - Anticipated volumes not yet materialised



## Operational Review – Agriculture Division



	2009	2008	% change
Revenue	<b>R 1.5 bn</b>	R 2.1 bn	(30%)
(Loss)/profit for the period	<b>(R 218 m)</b>	R 312 m	(170%)
Operating margin	<b>(14%)</b>	14%	

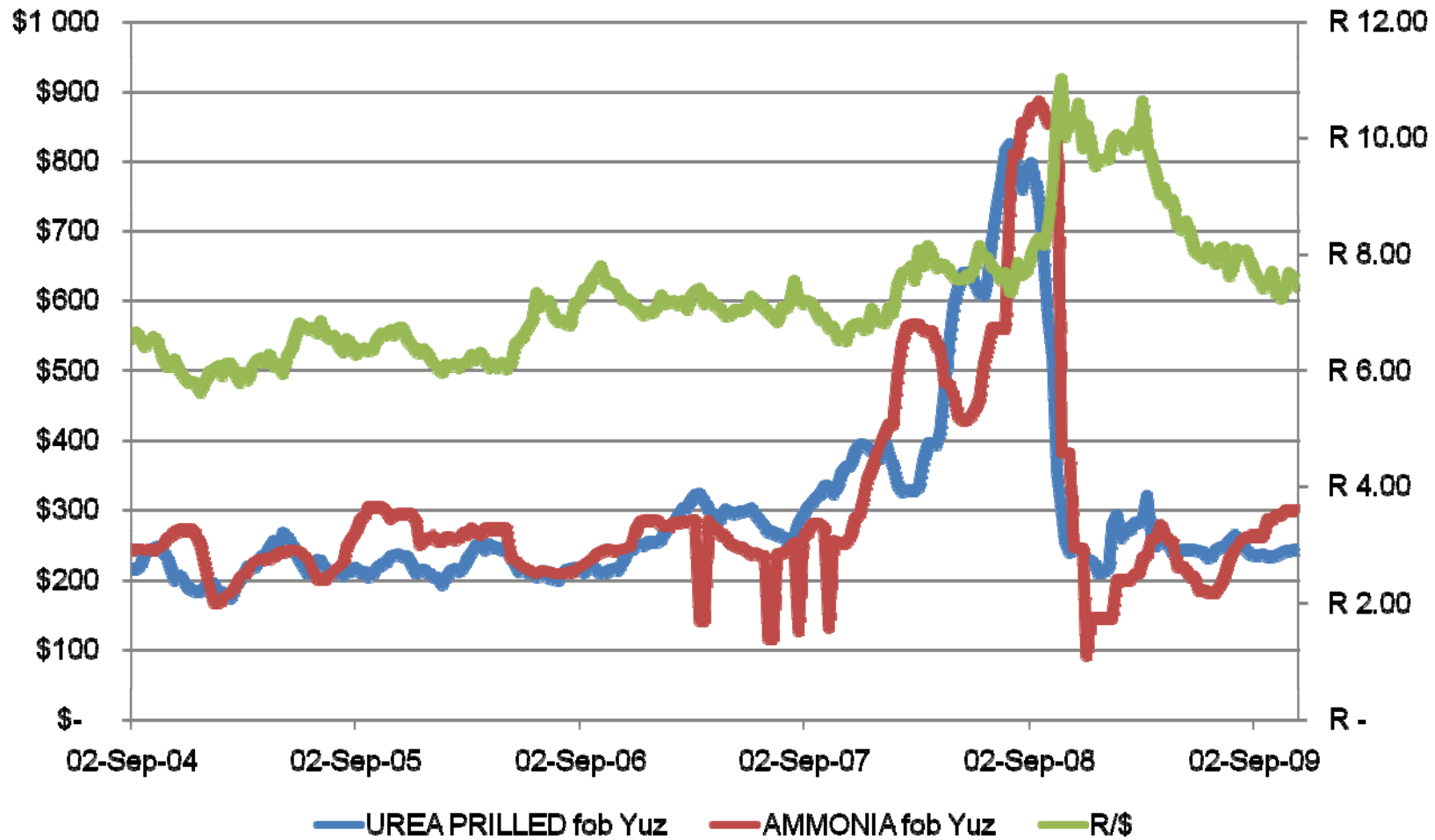
- Prior period results extraordinary and atypical
- Reduced demand in prior 6 months resulted in high carry-over stock
- Strengthening of rand
  - Carry-over stock revalued, resulting in stock write-down of R 350 m
- Decline in selling prices



# Raw Material Fundamentals

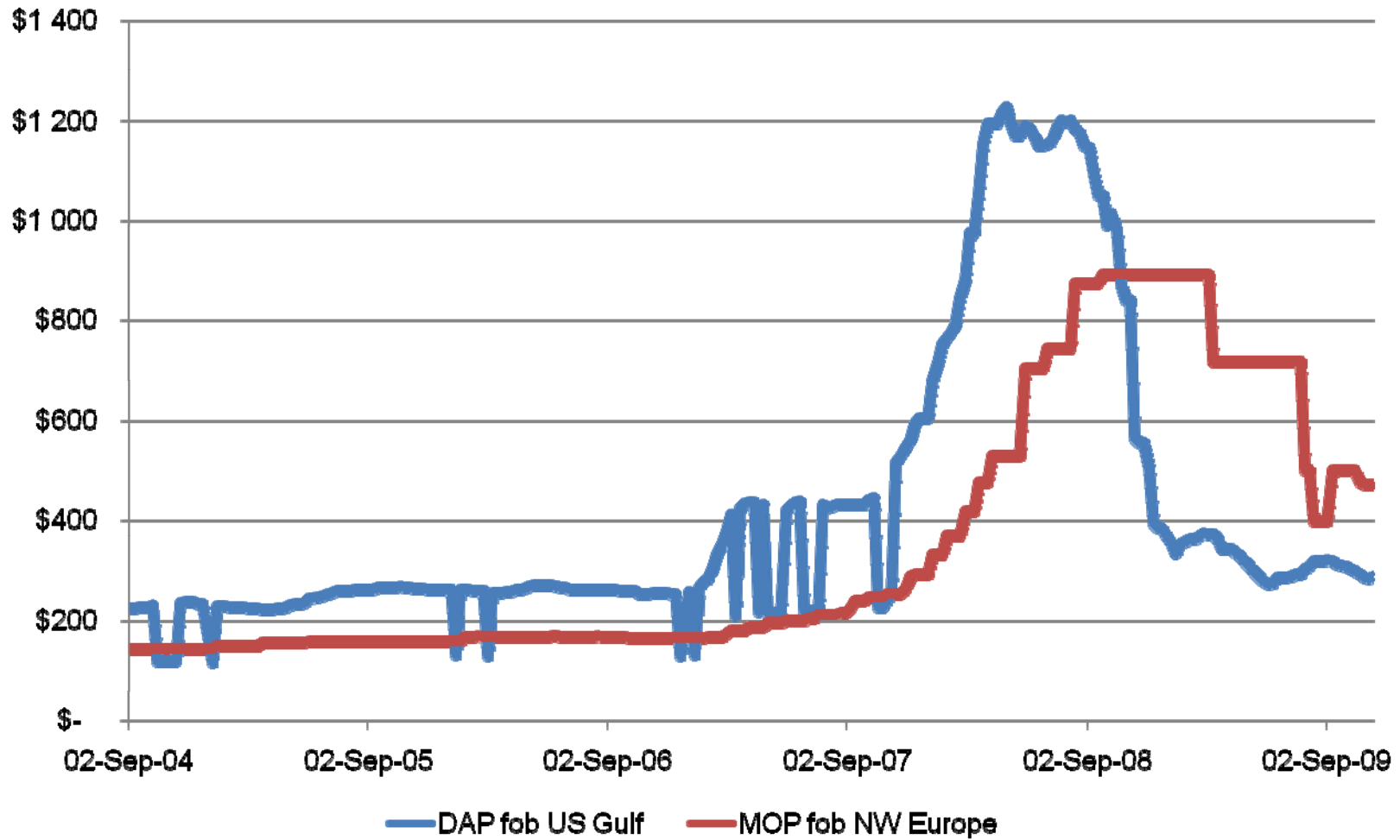


International cost per ton ammonia vs urea



OMRIA

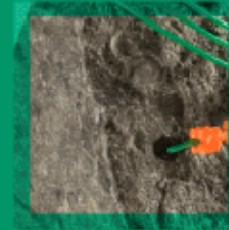
## Raw Material Fundamentals





## FINANCIAL REVIEW

creating customer wealth by leveraging knowledge



## Income Statement Features

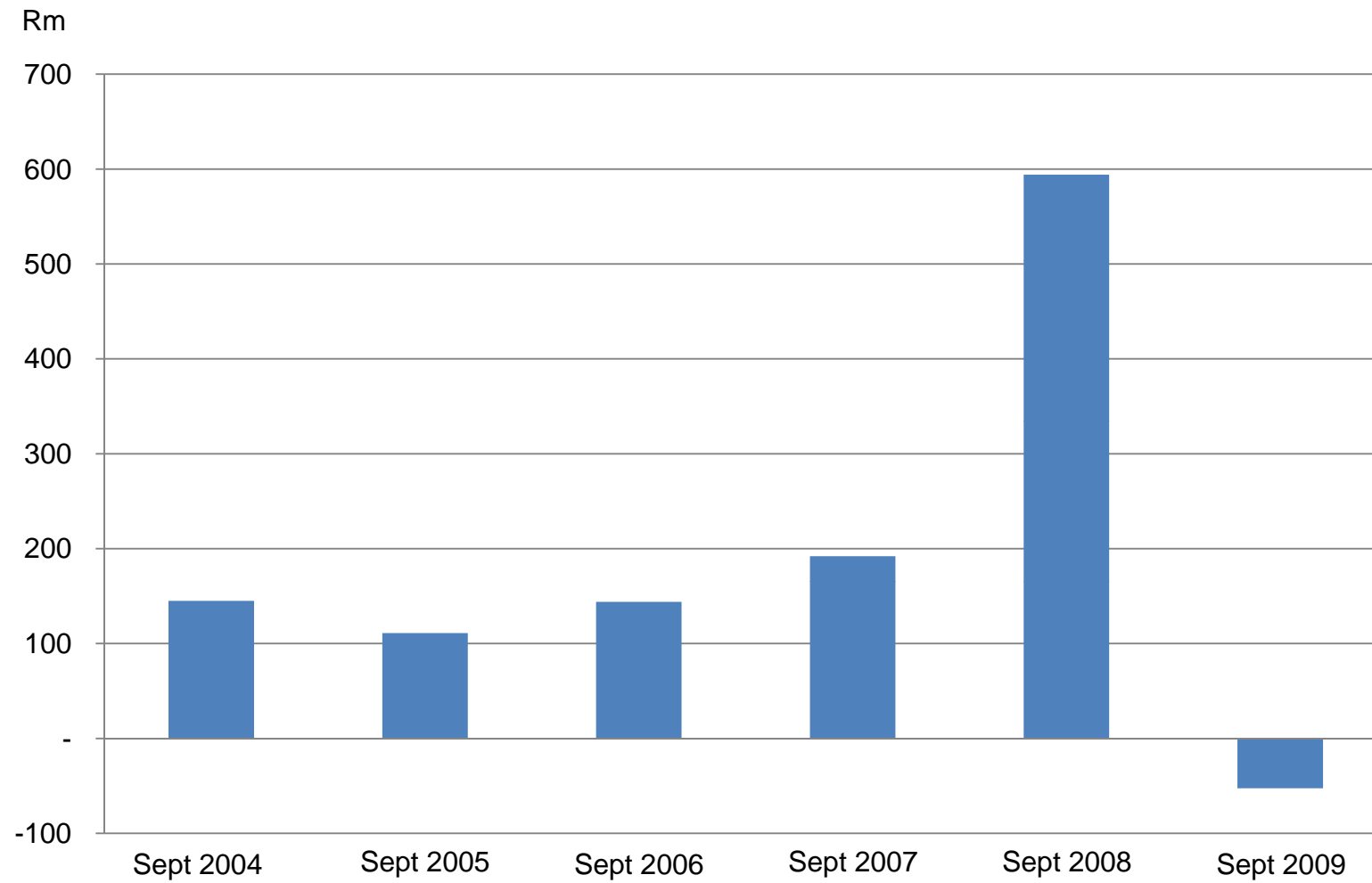


	6 Months		6 Months	Full year	6 Months
	Sept	%	Sept	Mar	Sept
R million	2009		2008	2009	2007
<b>SALES</b>	<b>4 249</b>	<b>(22%)</b>	<b>5 454</b>	<b>11 111</b>	<b>3 061</b>
Other operating income	40	17%	34	30	37
Distribution cost	(272)	1%	(268)	(639)	(193)
Administrative expense	(243)	(6%)	(259)	(546)	(199)
Operating expense	(0)		0	(34)	0
<b>OPERATING PROFIT</b>	<b>(53)</b>		<b>594</b>	<b>877</b>	<b>192</b>
Finance costs	(83)		(61)	(164)	(45)
Share of post tax profits of associate	2		0	5	0
Taxation	36		(160)	(227)	(50)
<b>Net profit after taxation</b>	<b>(99)</b>		<b>373</b>	<b>491</b>	<b>97</b>



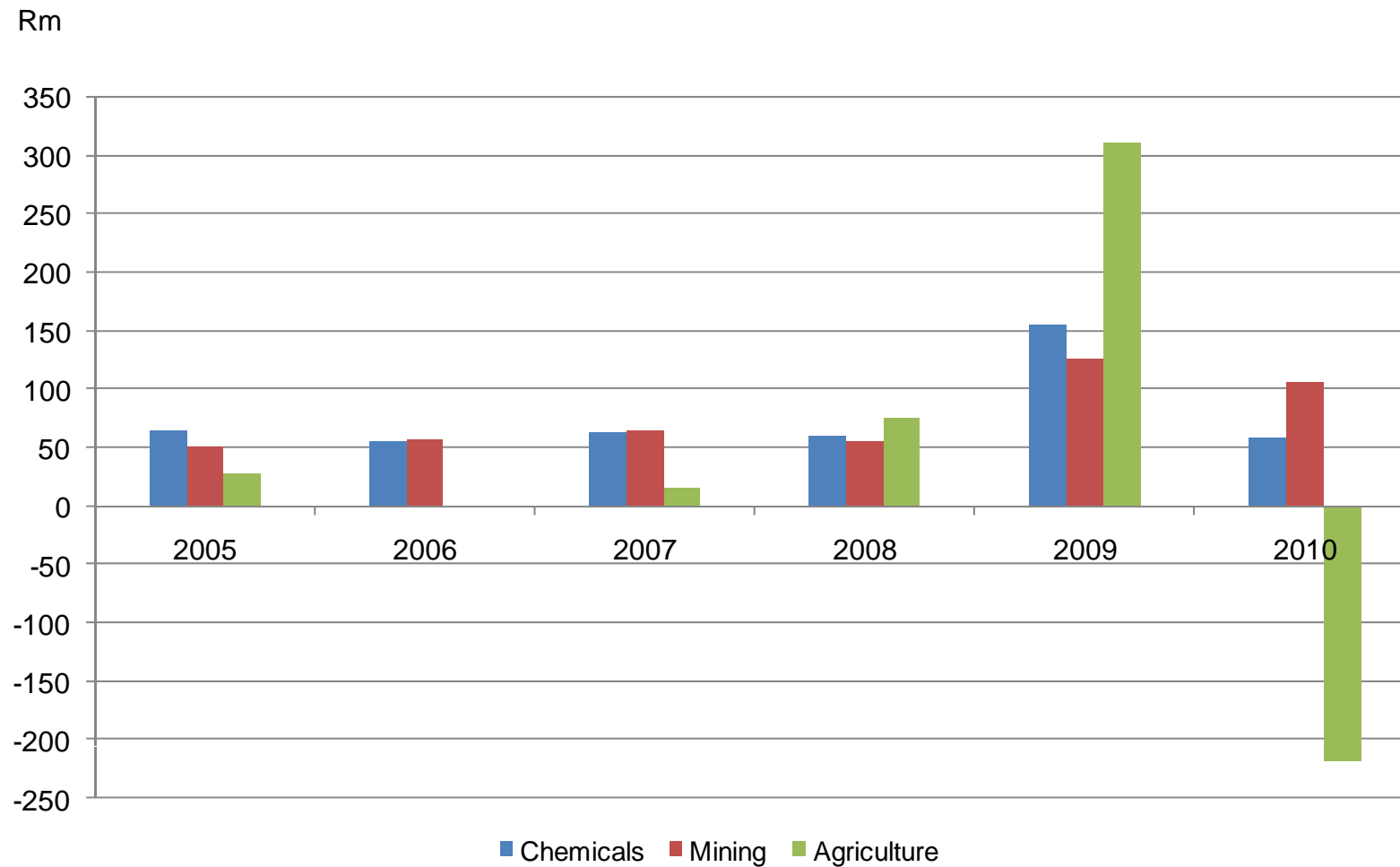
OMRIA

## Operating Profit



OMRIA

## Operating Profit – Interim Reporting



OMRIA

## Balance Sheet



	6 Months	6 Months	Full year	6 Months
	Sept	Sept	Mar	Sept
R million	2009	2008	2009	2007
<b>CAPITAL AND RESERVES</b>				
Stated capital	317	201	201	201
Treasury shares	(10)	(10)	(11)	(15)
Other reserves	(15)	141	286	18
Retained earnings	1 453	1 585	1 663	1 085
Minority interest	(2)	(2)	(2)	2
<b>Shareholders' equity</b>	<b>1 743</b>	<b>1 915</b>	<b>2 138</b>	<b>1 291</b>
<b>Closing R/\$ exchange rate</b>	<b>7.51</b>	<b>8.30</b>	<b>9.48</b>	<b>6.86</b>



OMRIA

## Balance Sheet



	6 Months Sept 2009	6 Months Sept 2008	Full year Mar 2009	6 Months Sept 2007
<b>R million</b>				
<b>PROPERTY, PLANT AND EQUIPMENT</b>	<b>1 203</b>	<b>1 025</b>	<b>1 114</b>	<b>819</b>
<b>INTANGIBLE ASSETS</b>	<b>505</b>	<b>507</b>	<b>517</b>	<b>429</b>
<b>NET WORKING CAPITAL</b>	<b>1 793</b>	<b>2 193</b>	<b>1 761</b>	<b>1 345</b>
Inventories	1 598	2 855	2 391	1 446
Trade and other receivables	1 549	1 681	1 342	1 373
Trade and other payables	1 354	2 343	1 973	1 474
<b>Taxation</b>	<b>(4)</b>	<b>69</b>	<b>20</b>	<b>31</b>
<b>Net interest bearing debt</b>	<b>1 513</b>	<b>1 542</b>	<b>954</b>	<b>1 184</b>
<b>Debt:equity ratio</b>	<b>87%</b>	<b>81%</b>	<b>45%</b>	<b>92%</b>
<b>Debt:Net tangible equity ratio</b>	<b>122%</b>	<b>110%</b>	<b>59%</b>	<b>137%</b>



OMRIA

## Consolidated Cashflow Statement



R million	6 Months Sept 2009	6 Months Sept 2008	Full year Mar 2009	6 Months Sept 2007
<b>Operating profit</b>	<b>(53)</b>	<b>594</b>	<b>877</b>	<b>192</b>
Depreciation and amortisation	61	54	122	38
Finance cost	(84)	(63)	(172)	(43)
Taxation paid	(86)	(167)	(283)	(61)
Utilised by working capital	(32)	(1 369)	(744)	(889)
Non-cash items	(186)	(17)	54	(31)
	<b>(380)</b>	<b>(968)</b>	<b>(146)</b>	<b>(794)</b>
Dividends paid	(41)	(55)	(96)	(39)
<b>(Utilised by)/generated from operations</b>	<b>(421)</b>	<b>(1 023)</b>	<b>(243)</b>	<b>(833)</b>
<b>Net cash outflow from investing activities</b>	<b>(140)</b>	<b>(83)</b>	<b>(257)</b>	<b>(86)</b>
<b>Net cash inflow from financing activities</b>	<b>511</b>	<b>17</b>	<b>389</b>	<b>228</b>
<b>(Decrease)/increase in funds available</b>	<b>(50)</b>	<b>(1 089)</b>	<b>(111)</b>	<b>(691)</b>



OMRIA

## Segmental Analysis

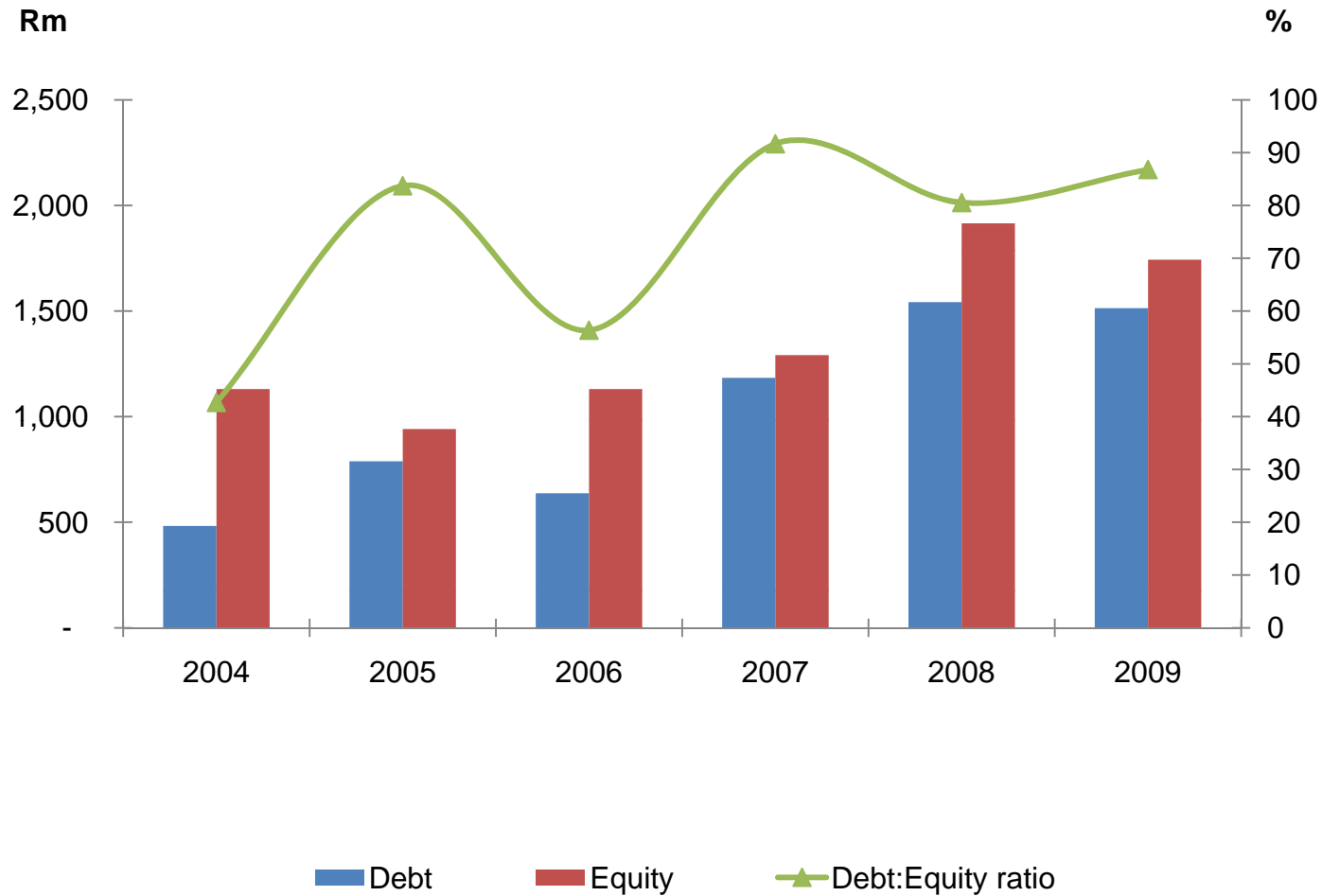


R million	6 Months Sept 2009	6 Months Sept 2008	Full year Mar 2009	6 Months Sept 2007
<b><u>CHEMICALS</u></b>				
Revenue	1 844	2 294	4 528	1 509
Operating profit	59	156	198	60
Operating margin	3%	7%	4%	4%
Segment assets	1 698	1 966	2 070	1 534
Segment liabilities	(865)	(1 261)	(1 150)	(1 289)
<b><u>MINING</u></b>				
Revenue	899	1 006	2 111	581
Operating profit	106	126	269	56
Operating margin	12%	13%	13%	10%
Segment assets	749	768	826	498
Segment liabilities	(389)	(462)	(586)	(334)
<b><u>AGRICULTURE</u></b>				
Revenue	1 506	2 154	4 472	971
Operating profit	(218)	312	410	76
Operating margin	-14%	15%	9%	8%
Segment assets	2 628	3 543	2 847	2 034
Segment liabilities	(1 158)	(2 216)	(1 746)	(806)



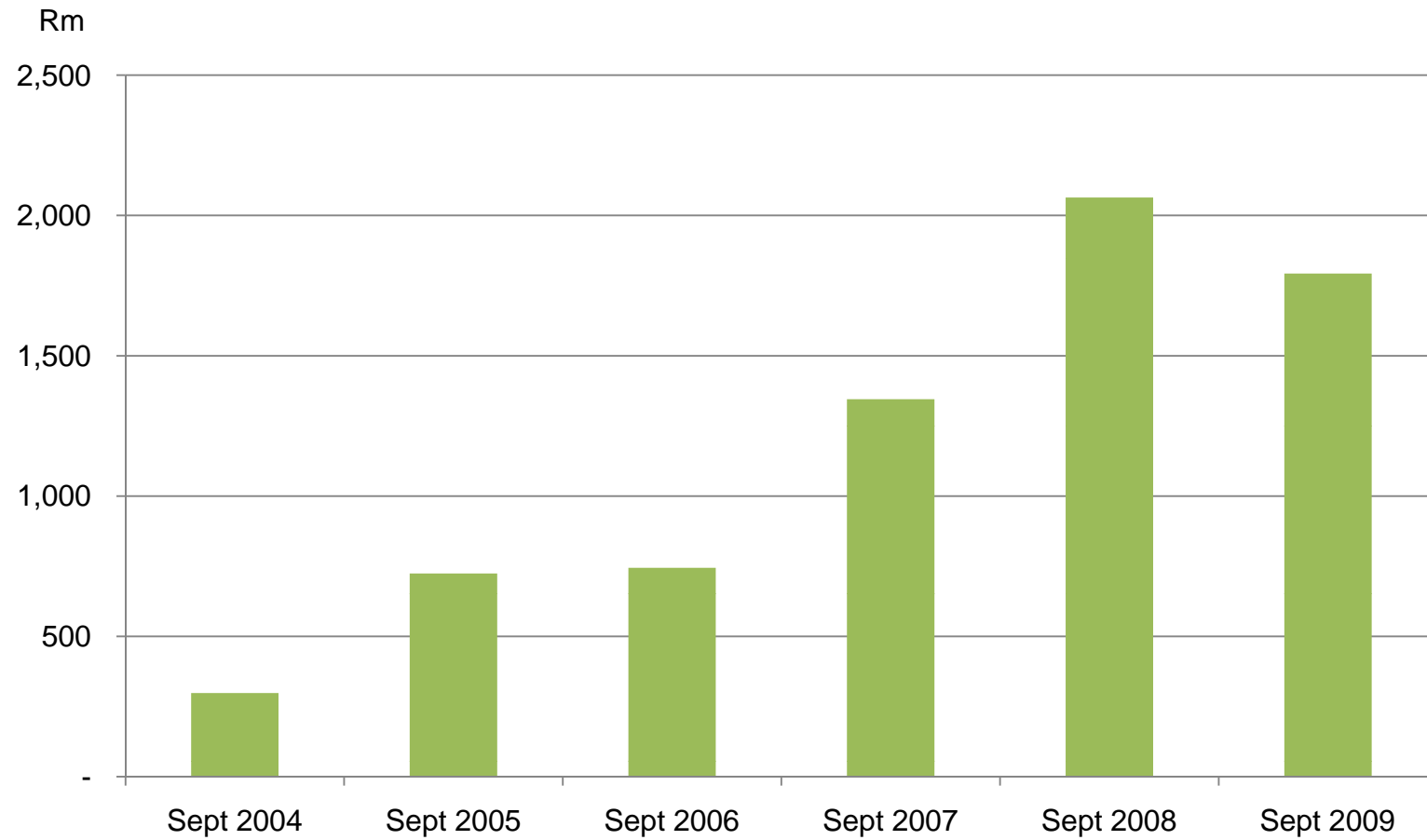
OMRIA

## Debt : Equity Ratio – Interim Reporting



OMRIA

## Net Working Capital

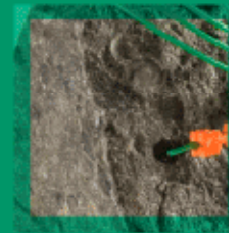


OMRIA



## PROSPECTS

creating customer wealth by leveraging knowledge



---

## Group Outlook - Short Term



- Anticipate return to profitability for full year
  - Volumes beginning to recover in mining
  - Sales of shock tube increasing
  - Second half period fertilizer demand expected to normalise
- Cost reduction activities progressing
- Carbon credit sales expected in second half
- Nitrophos plant production ramping up
- Persistent strength of the rand a concern



---

## Group Outlook – Long Term



- Company well-positioned in strategic sectors
  - Water, alternate energy and agriculture
- Continuous assessment of acquisitions
- Feasibility study for second nitric acid plant progressing
- Management five year target set at 8% real growth off a base of R383 m beginning 01 April 2009





THANK YOU

creating customer wealth by leveraging knowledge

